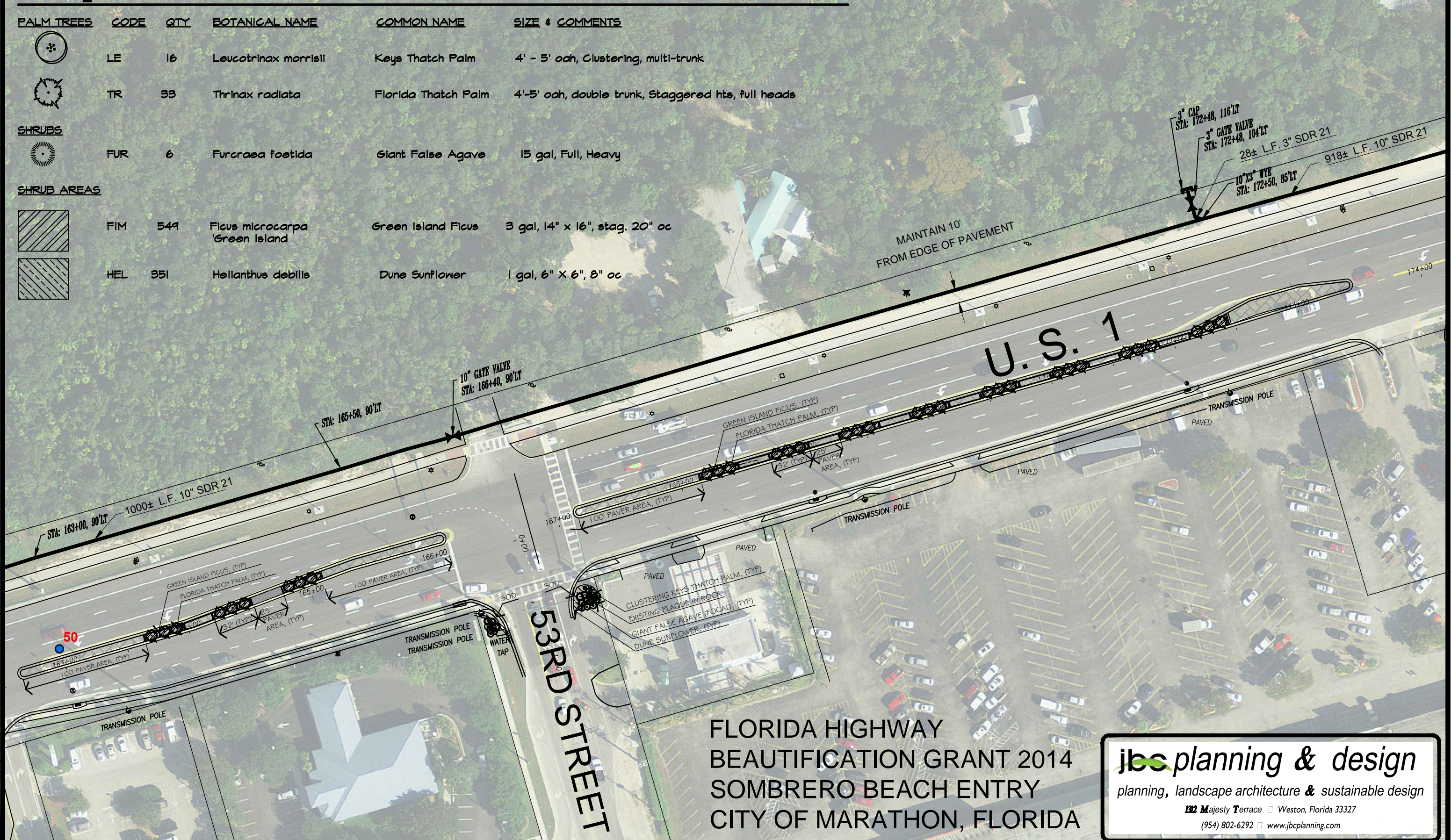


PLANT_SCHEDULE

PALM TREES	CODE	QTY	BOTANICAL NAME	COMMON NAME	SIZE & COMMENTS
	LE	16	Leucotrinx morrisii	Keys Thatch Palm	4' - 5' oah, Clustering, multi-trunk
	TR	33	Thrinax radiata	Florida Thatch Palm	4'-5' oah, double trunk, Staggered hts, full heads
SHRUBS					
	FUR	6	Furcraea foetida	Giant False Agave	15 gal, Full, Heavy
SHRUB AREAS					
	FIM	549	Ficus microcarpa 'Green Island	Green Island Ficus	3 gal, 14" x 16", stag. 20" oc
	HEL	351	Helianthus debilis	Dune Sunflower	1 gal, 6" X 6", 8" oc



FLORIDA HIGHWAY
BEAUTIFICATION GRANT 2014
SOMBRERO BEACH ENTRY
CITY OF MARATHON, FLORIDA

jbc planning & design
 planning, landscape architecture & sustainable design
 132 Majesty Terrace □ Weston, Florida 33327
 (954) 802-6292 □ www.jbcplanning.com

PLANT_SCHEDULE

TREES	CODE	QTY	BOTANICAL NAME	COMMON NAME	SIZE & COMMENTS
	QV	5	<i>Quercus virginiana</i>	Live Oak	3" cal., 14'-16' oah, FS, B&B
PALM TREES					
	LE2	24	<i>Leucotrinx morriell</i>	Keys Thatch Palm	4' - 5' oah, Clustering, Multi-trunk
	LE	79	<i>Leucotrinx morriell</i>	Keys Thatch Palm	4' - 5' oah, Single trunk, full
	PE3	3	<i>Ptychosperma elegans</i>	Triple Alexander Palm	12'-14' oah, Triple Trunk
	SP	77	<i>Sabal palmetto</i>	Cabbage Palmetto	16'-18' oah, Slick trunk
SHRUBS					
	CS2	7	<i>Conocarpus erectus Sericeus</i>	Silver Buttonwood	25 gal, 6' - 7' ht, Full to base
	FUR	3	<i>Furcraea foetida</i>	Giant False Agave	15 gal, Full, Heavy

PLANT_SCHEDULE

SHRUB AREAS	CODE	QTY	BOTANICAL NAME	COMMON NAME	SPACING & COMMENTS
	FIM	949	<i>Ficus microcarpa 'Green Island'</i>	Green Island Ficus	3 gal 14" x 16", stag. 20" oc
	HAP	1,094	<i>Hamelia patens 'Compacta'</i>	Dwarf Fire Bush	3 gal 20" x 20", stag 3' oc
	HEL	1,305	<i>Helianthus debilis</i>	Dune Sunflower	1 gal 6" X 6", 8" oc
	SPB	3,949	<i>Spartina bakeri</i>	Sand Cord Grass	1 gal 9" X 9" stag 18" oc
	ZAP	80	<i>Zamia pumila</i>	Coontie	3 gal 14"-16" Full

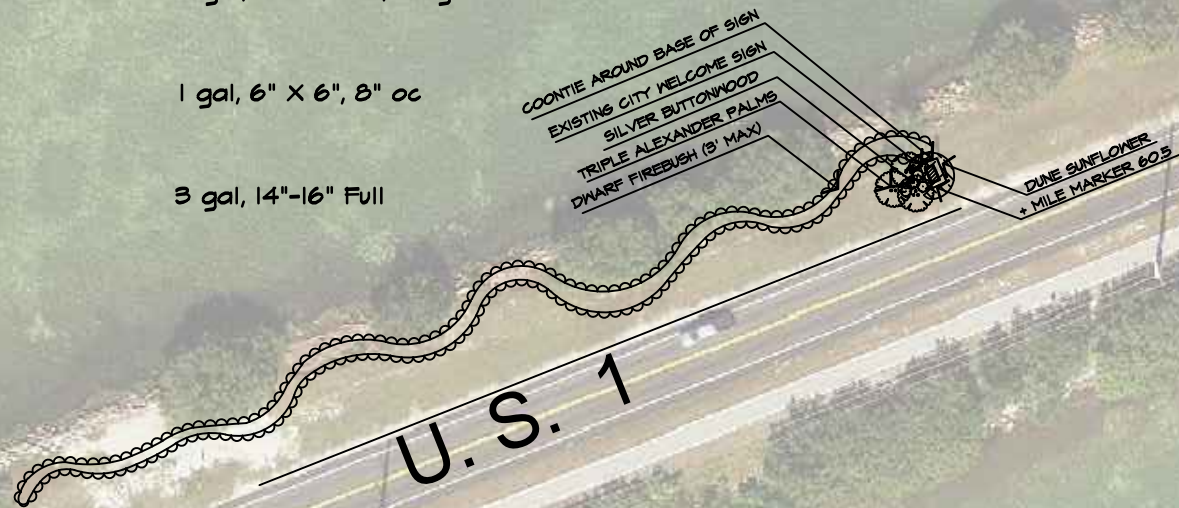


FLORIDA HIGHWAY
BEAUTIFICATION GRANT 2014
SEVEN MILE ENTRY
CITY OF MARATHON, FLORIDA

jbc planning & design
planning, landscape architecture & sustainable design
1312 Majesty Terrace □ Weston, Florida 33327
(954) 802-6292 □ www.jbcplanning.com

PLANT_SCHEDULE

PALM TREES	CODE	QTY	BOTANICAL NAME	COMMON NAME	SIZE & COMMENTS
	PES	3	<i>Ptychosperma elegans</i>	Triple Alexander Palm	12'-14' oah, Triple Trunk
SHRUBS					
	CS2	5	<i>Conocarpus erectus Sericeus</i>	Silver Buttonwood	25 gal, 6' - 7' ht, Full to base
SHRUB AREAS					
	HAP	524	<i>Hamella patens 'Compacta'</i>	Dwarf Fire Bush	3 gal, 20" x 20", stag 3' oc
	HEL	323	<i>Helianthus debilis</i>	Dune Sunflower	1 gal, 6" X 6", 8" oc
	ZAP	30	<i>Zamia pumila</i>	Coontie	3 gal, 14"-16" Full



FLORIDA HIGHWAY
 BEAUTIFICATION GRANT 2014
 GRASS KEY
 CITY OF MARATHON, FLORIDA

jbc planning & design
 planning, landscape architecture & sustainable design
 1312 Majesty Terrace □ Weston, Florida 33327
 (954) 802-6292 □ www.jbcplanning.com

PLANT_SCHEDULE

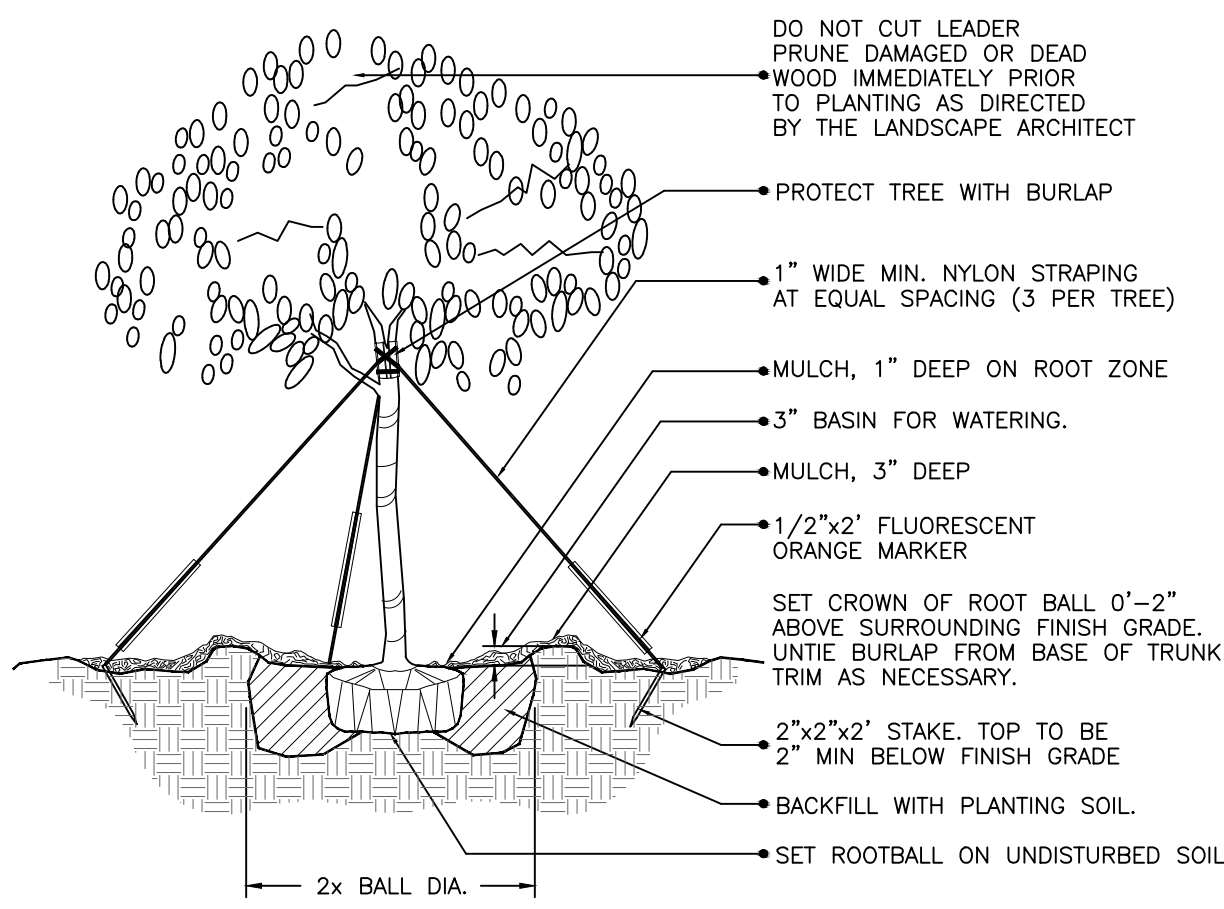
TREES	CODE	QTY	BOTANICAL NAME	COMMON NAME	SIZE & COMMENTS
	QV	5	<i>Quercus virginiana</i>	Live Oak	3" cal., 14'-16' oah, FG, B&B
PALM TREES					
	LE	62	<i>Leucotrinx morrisii</i>	Keys Thatch Palm	4' - 5' oah, Clustering, multi-trunk
	SP2	54	<i>Sabal palmetto</i>	Cabbage Palmetto	14' - 18' ct, B&B, full, stagger hts.
	SP	184	<i>Sabal palmetto</i>	Cabbage Palmetto	16'-18' oah, Slick trunk
SHRUB AREAS					
	HAP	812	<i>Hamella patens 'Compacta'</i>	Dwarf Fire Bush	3 gal, 20" x 20", stag 3' oc
	SER	764	<i>Serenoa repens 'Silver Form'</i>	Silver Saw Palmetto	3 gal, 14" x 16" full, stag 2.5' oc
	SPB	10,129	<i>Spartina bakeri</i>	Sand Cord Grass	1 gal, 9" X 9" stag 18" oc



FLORIDA HIGHWAY
 BEAUTIFICATION GRANT 2014
 COCOPLUM DRIVE ENTRY
 CITY OF MARATHON, FLORIDA

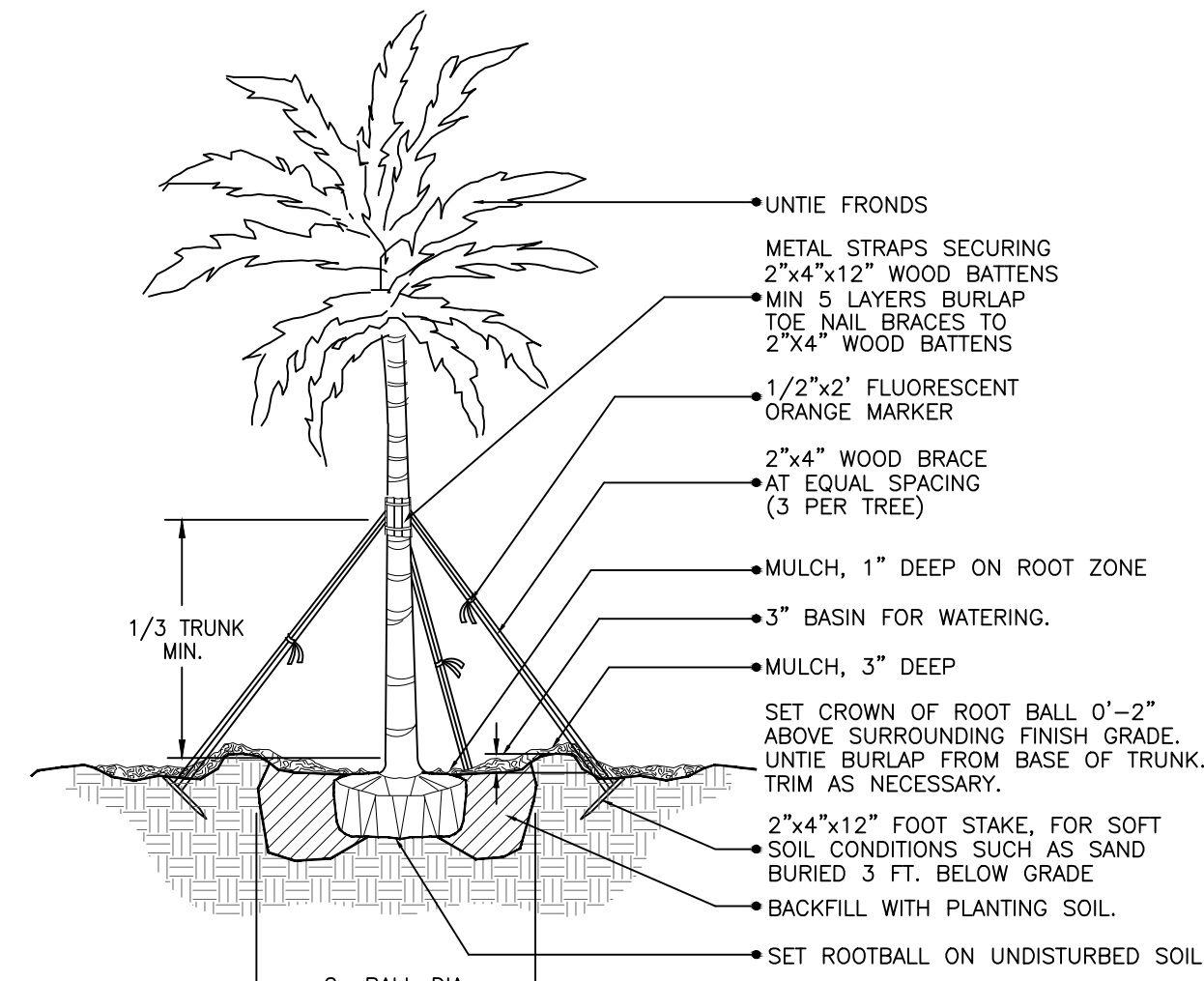
jbcd planning & design
 planning, landscape architecture & sustainable design
 1312 Majesty Terrace □ Weston, Florida 33327
 (954) 802-6292 □ www.jbcdplanning.com





(2" cal. and over)
LARGE TREE PLANTING DETAIL

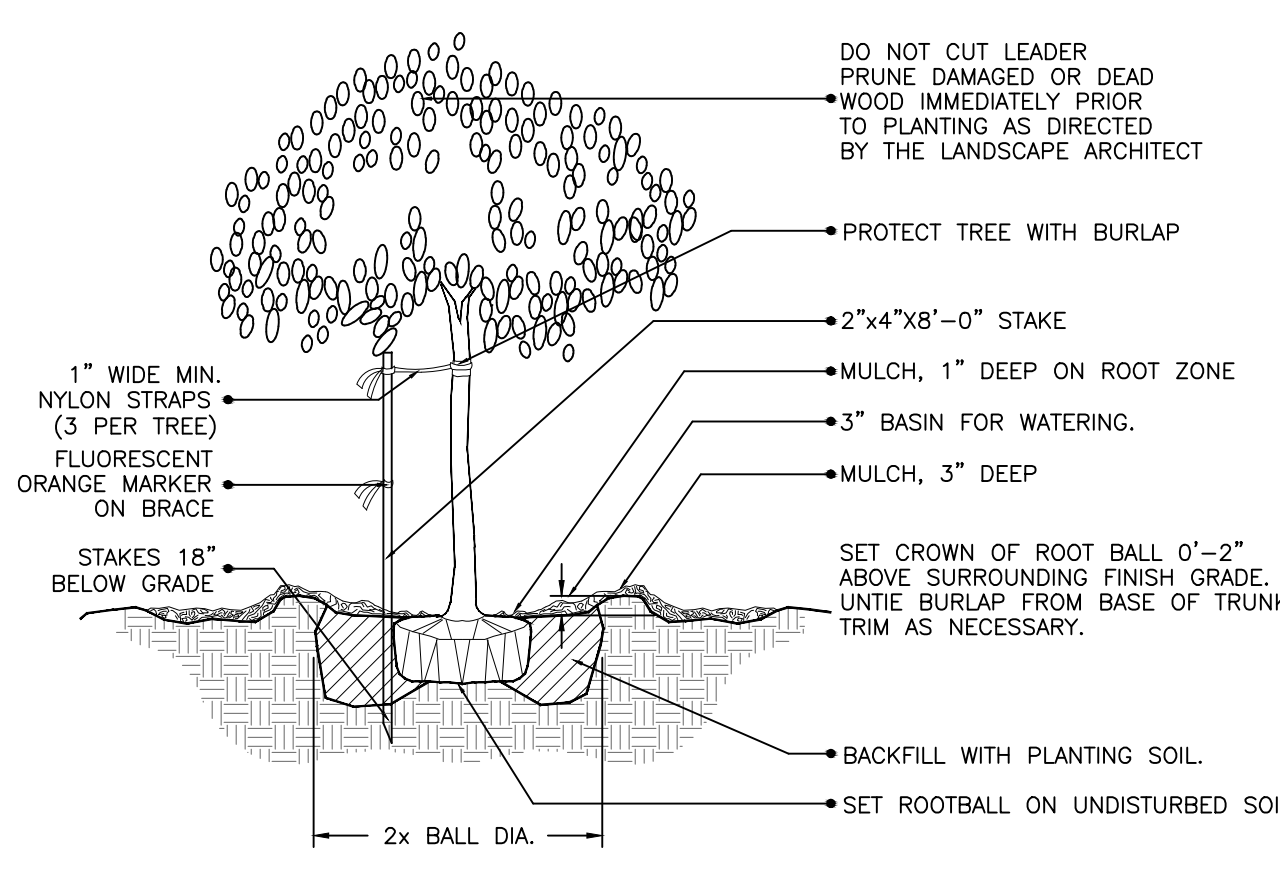
NTS.



LARGE PALM PLANTING DETAIL

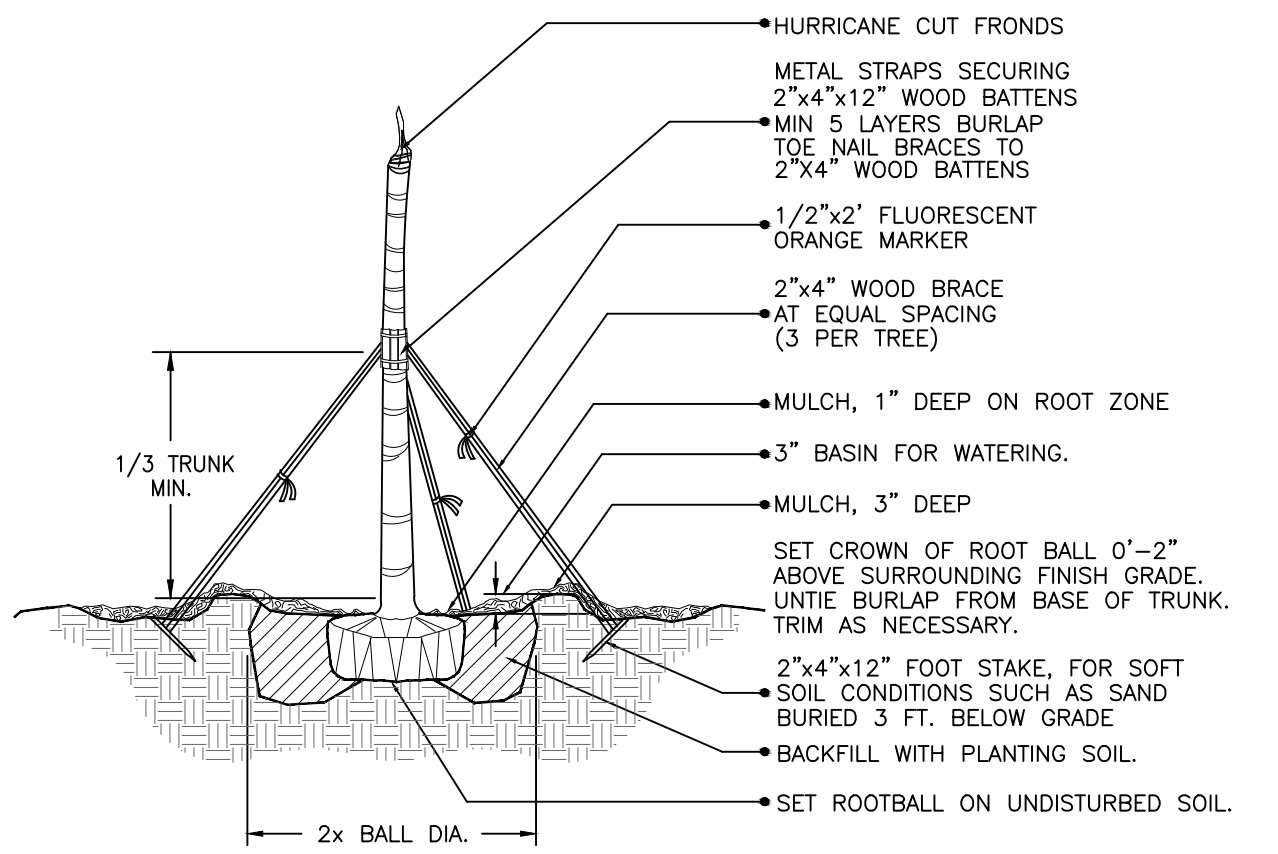
NTS.

- GENERAL NOTES:**
1. PLANT MATERIAL: All plant material shall be Florida #1 or better, as established by 'Grades and Standards for Nursery Plants' of the state of Florida, Department of Agriculture.
 2. All trees, shrubs and groundcovers shall be of the sizes as specified in the Plant List.
 3. Quantities listed on the the Plant List are for estimating purposes. Contractor shall verify all quantities. Mulch, topsoil, fertilizer, etc. shall be included in the unit cost of the plants.
 4. Where there is a discrepancy either in quantities, plant names, sizes or specifications between the plan or plant list, the plan takes precedence.
 5. All planting beds and water basins for trees shall be covered with a 3" minimum depth of shredded eucalyptus or florimulch grade 'B' or better.
 6. The Planting Plan shall be installed in compliance with all existing codes and applicable deed restrictions.
 7. SOD: All areas not used for buildings, vehicular use areas, walks or planting beds shall be grassed. Grassing shall extend to any abutting street pavement edge and to the mean waterline of any abutting canal, lake or waterway.
 8. PLANTING SOIL: All trees and shrubs shall be planted with a minimum of 12" topsoil around and beneath the rootball. Minimum topsoil shall be 6" for groundcover areas and 2" for sodded grass areas.
 9. Planting soil to be a weed-free mixture of 50% sand, 40% muck, and 10% Canadian peat. All plant material to receive planting soil as per details.
 10. Contractor is responsible for determining all utility locations and installing facilities so as to not conflict. All damage to existing utilities or improvements caused by Contractor shall be repaired at no additional cost to the Owner.
 11. Contractor to notify "Sunshine State One Call of Florida, Inc." at 1-800-432-4110 Two Full Business Days prior to digging for underground utility locations.
 12. Contractor shall be responsible for providing final grading of all associated planting areas.
 13. After final grade, area to be raked to 6" depth and all rock and foreign inorganic materials removed and disposed of properly off-site.
 14. All planting holes to be hand dug except where machine dug holes will not adversely affect or damage utilities or improvements (see note 8).
 15. No plugging of any tree or palm will be accepted. All plants to be planted at the nursery grade or slightly higher.
 16. Contractor shall stake 4 guy all trees and palms at time of planting as per the appropriate detail. Contractor is responsible for the maintenance and/or repair of all staking and guying during warranty period and removal & disposal of staking after establishment period.
 17. Fertilizer for grass areas shall be NPK 16-4-8 @ 12.5 lbs/1000 s.f. or 545 lbs/acre. Nitrogen 50% slow release form 4 fertilizer to include secondary micronutrients.
 18. SUBSTITUTIONS AND CHANGES: All substitutions and changes shall be approved in writing prior to installation. Any discrepancies between plans, site and specifications shall be brought to the immediate attention of the Landscape Architect, the owner and governing municipality.
 19. WATERING: All plant material shall be watered in at time of planting in accordance with standard nursery practices. In addition, Contractor will continue watering of plant material until substantial completion and as needed thereafter for a period of 2 months.
 20. All new plant material shall be guaranteed for 1 year from time of final acceptance of project. Any plant material not in a healthy growing condition will be replaced by the Contractor at no additional cost to the Owner within 10 days of notification. For all replacement plant material, the warranty period shall be extended an additional 45 days beyond the original warranty period. All trees that lean or are blown over, caused by winds less than 15 mph, will be re-set and braced by the Contractor at no additional cost to the Owner.
 21. The successful bidder shall furnish to the Owner a unit price breakdown for all materials. The Owner may, at its discretion, add or delete from the materials utilizing the unit price breakdown submitted.
 22. No plant material will be accepted showing evidence of cable, chain marks, equipment scars, or otherwise damaged.
 23. Plant material will not be accepted when the ball of earth surrounding its roots has been cracked, broken or otherwise damaged.
 24. Root-prune all trees a minimum of (8) weeks prior to planting.
 25. All landscaped areas will be irrigated by an underground, automatic, rust-free irrigation system providing 100% coverage and 100% spray overlap. The system shall be maintained in good working order and designed to minimize water on impervious services and not overspray walkways. A rain sensor device shall be installed to override the irrigation cycle of the system when adequate rainfall has occurred.
 26. All plant material planted within the sight distance triangle areas (see plan) shall provide unobstructed cross-visibility at a horizontal level between 30 inches and 8 feet above adjacent street grade.
 27. No canopy trees shall be planted within 12 feet of a light pole. No palm species shall be planted within 6 feet of a light pole.
 28. Ground cover plantings shall provide not less than 50 percent coverage immediately upon planting and 100 percent coverage within 6 months after planting.
 29. Tree protection barricades shall be provided by Landscape Contractor around existing trees that may be impacted by the proposed construction. Prior to any construction a tree protection barricade inspection shall be conducted by the landscape architect, owner or governing municipality. Refer to landscape detail for tree preservation barricade fencing.
 30. In all pedestrian areas, all trees and palms shall be maintained to allow for clear passage at an 8 foot clear trunk.
 31. All landscape material shall be setback a minimum of 10' from any Fire Hydrant.



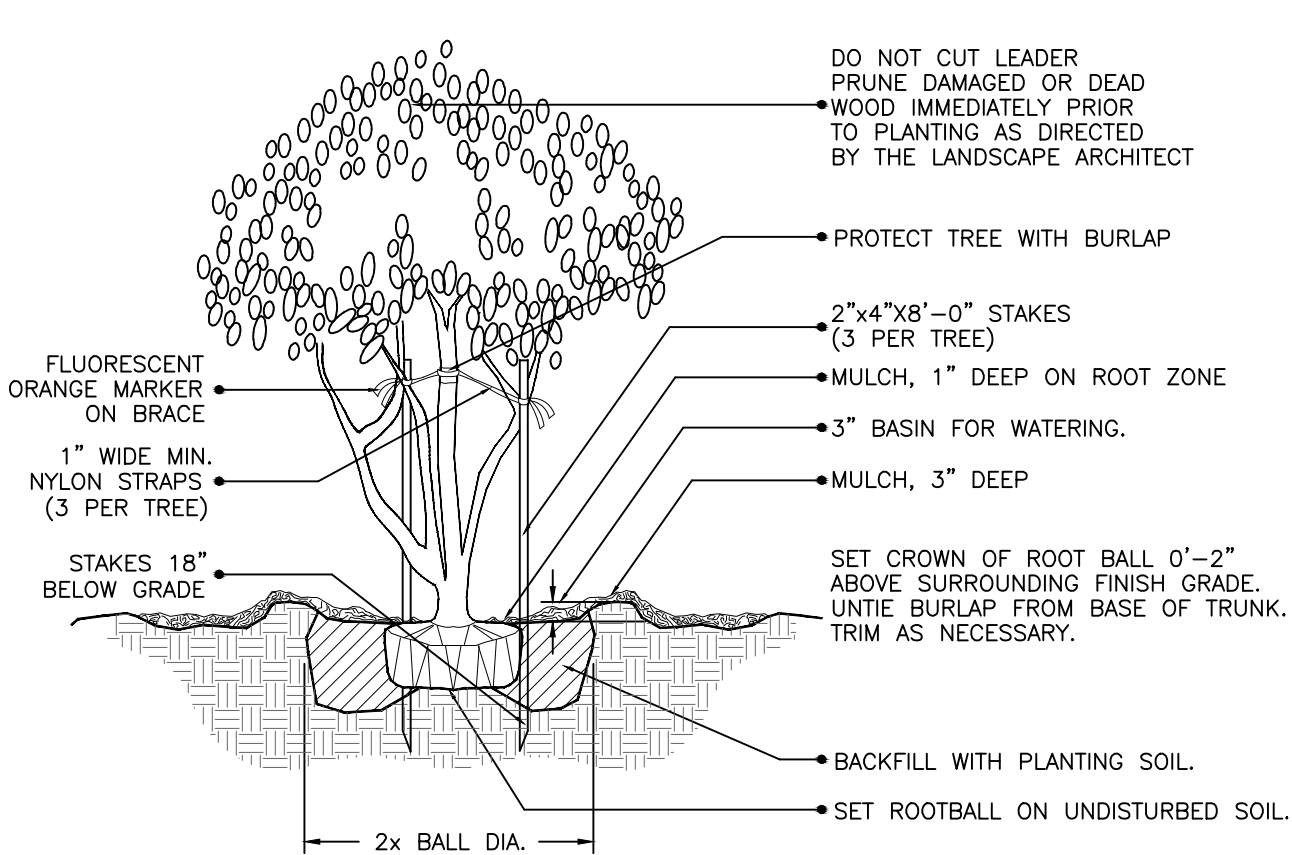
(2" cal. and under)
SMALL TREE PLANTING DETAIL

NTS.



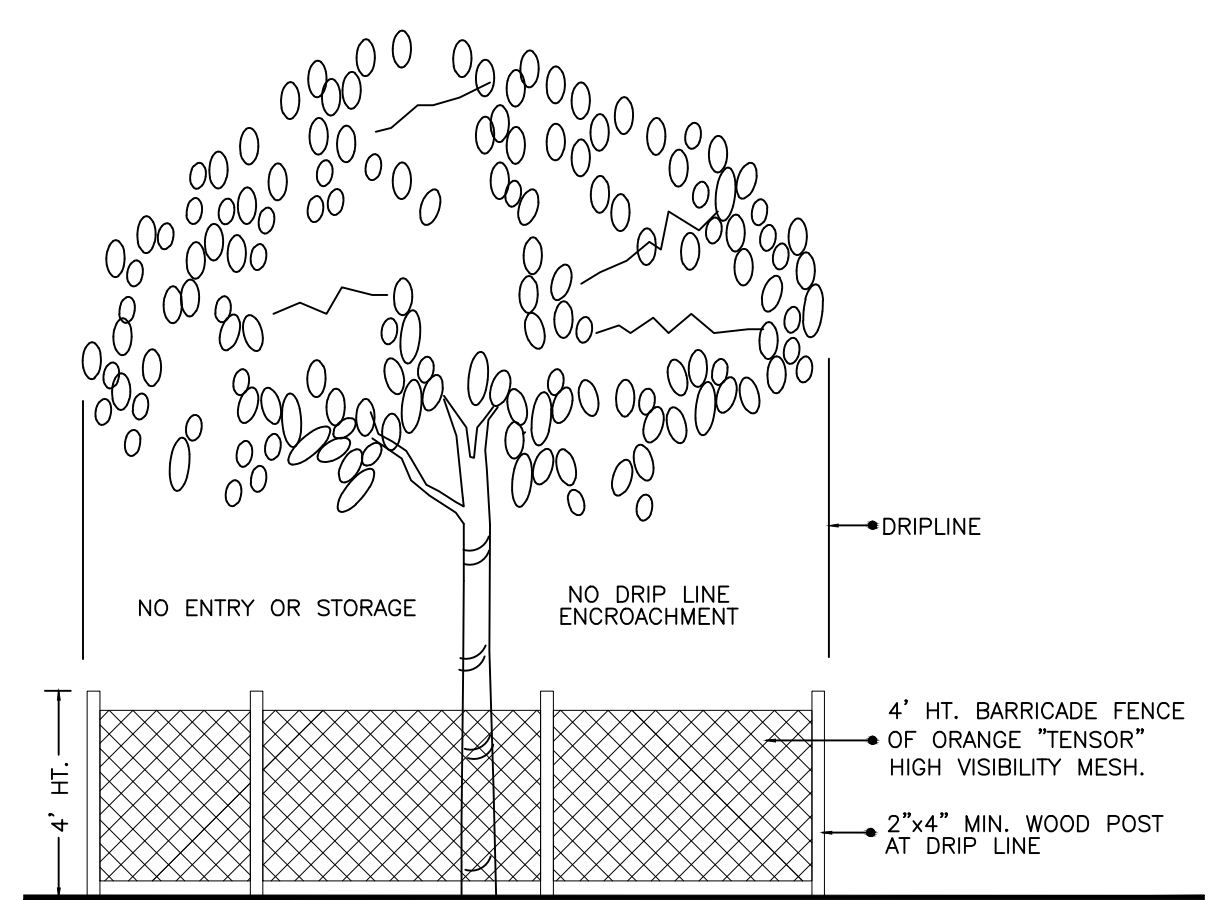
CIGARED SABAL PALM PLANTING DETAIL

NTS.



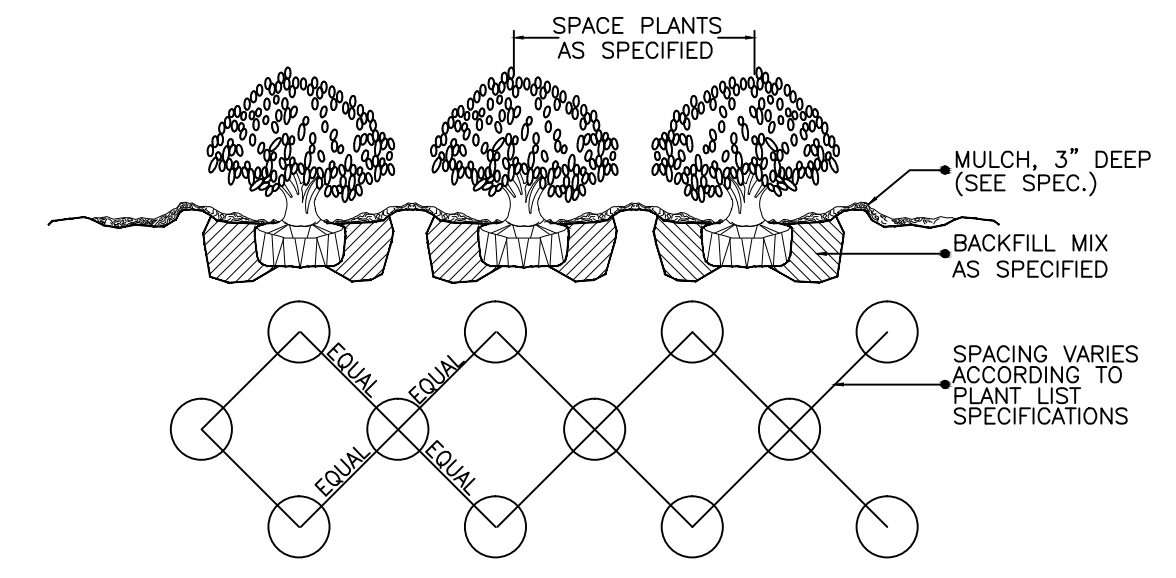
MULTI- TRUNK AND SMALL TREE (2" cal. and under) PLANTING DETAIL

NTS.



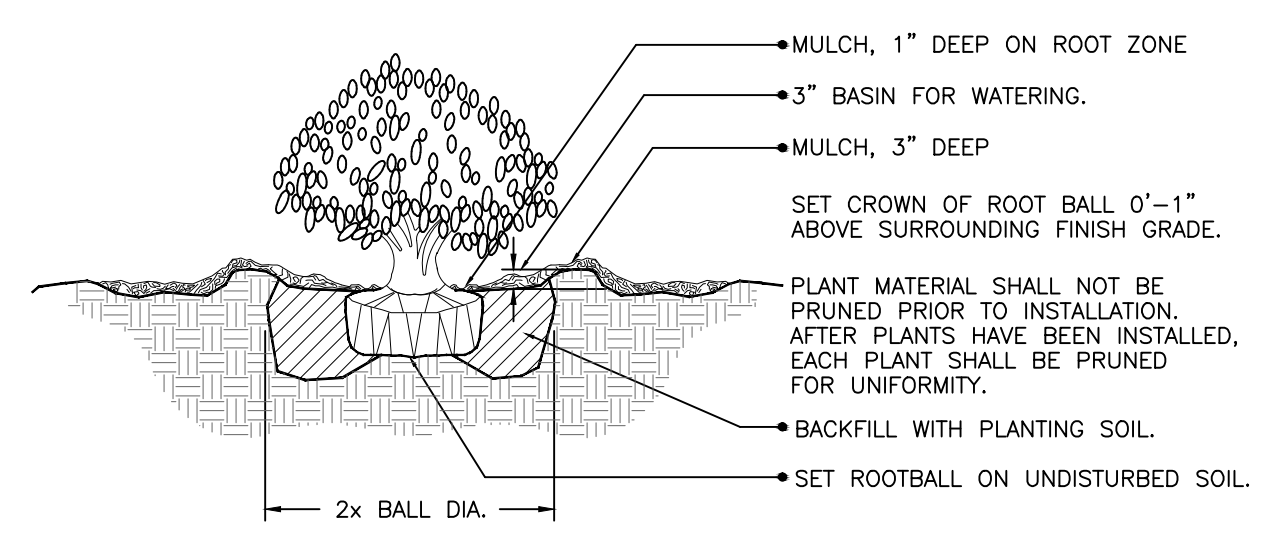
TREE PRESERVATION BARRICADE FENCING DETAIL

NTS.



SHRUB / GROUNDCOVER SPACING / PLANTING DETAIL

NTS.



SHRUB PLANTING DETAIL

NTS.

C:\PROJ\ACAD\DATA\14-0917 - MARATHON ENTRIES - 7.MEY14-0917.7.ME.LIN.PLOT.DWG