

**CITY OF MARATHON, FLORIDA  
RESOLUTION 2026-06**

**A RESOLUTION OF THE CITY COUNCIL OF THE CITY OF MARATHON, FLORIDA AUTHORIZING A “PIGGYBACK” PURCHASE UTILIZING THE SOURCEWELL MASTER AGREEMENT #041525 PURSUANT TO THE CITY’S PURCHASING POLICIES AND PROCEDURES AND APPROVING THE PURCHASE OF EIGHT FREESTANDING SOLAR LIGHT POLES AND FIXTURES FOR THE NEW PICKLEBALL COURTS AT OCEANFRONT PARK FROM FONROCHE LIGHTING AMERICA IN AN AMOUNT NOT TO EXCEED \$41,226.00; AUTHORIZING THE CITY MANAGER TO EXECUTE THE AGREEMENT, APPROPRIATE FUNDS/EXPEND BUDGETED FUNDS AND PROVIDING FOR AN EFFECTIVE DATE**

**WHEREAS**, pursuant to Ordinance 2024-13, the City adopted purchasing policies and procedures (the “Purchasing Policies and Procedures”) after determining that it was fiscally prudent and in the City’s best interest to adopt policies and procedures for City employees and officials regarding the acquisition and purchase of contractual services, equipment, goods, and other similar types of services; and

**WHEREAS**, the Purchasing Policies and Procedures allow the City Council to enter into contracts for materials, supplies, equipment, public improvements or services without competitive bidding by utilizing existing contract terms and prices entered into by other local, state or federal governmental authorities that followed a competitive bidding procedure leading to the award of the contract in question; and

**WHEREAS**, the City desires to take advantage of the Sourcewell master agreement #041525, the purchase of eight freestanding solar light poles and fixtures for the new pickleball courts at oceanfront park from Fonroche lighting America in an amount not to exceed \$41,226.00.

**NOW, THEREFORE, BE IT RESOLVED BY THE CITY COUNCIL OF THE CITY OF MARATHON, FLORIDA, THAT:**

**Section 1.** The above recitals are true and correct and incorporated herein.

**Section 2.** The City Council hereby authorizes the City Manager to enter into an agreement and expend budgeted funds on behalf of the City for the purchase of eight freestanding solar light poles and fixtures for the new pickleball courts at oceanfront park from Fonroche lighting America in an amount not to exceed \$41,226.00.

**Section 3.** This resolution shall take effect immediately upon its adoption.

**PASSED AND ADOPTED BY THE CITY COUNCIL OF THE CITY OF MARATHON, FLORIDA, THIS 13<sup>TH</sup> DAY OF JANUARY, 2026.**

THE CITY OF MARATHON, FLORIDA

  
Lynny Del Gaizo, Mayor

AYES: Landry, Matlock, Still, Struyf, Del Gaizo  
NOES: None  
ABSENT: None  
ABSTAIN: None

**ATTEST:**

  
Diane Clavier, City Clerk

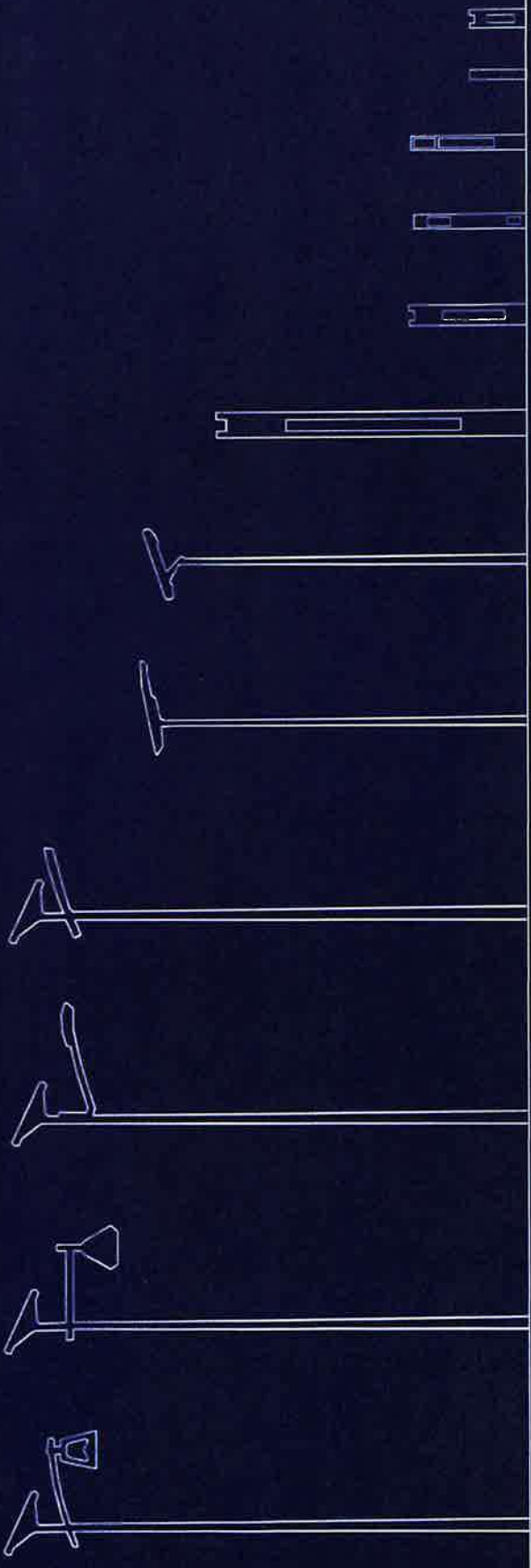
(City Seal)

**APPROVED AS TO FORM AND LEGALITY FOR THE USE AND RELIANCE OF THE CITY OF MARATHON, FLORIDA ONLY:**

  
Steve Williams, City Attorney

Lighting Design  
11/19/2025

# City of marathon FL- Pickleball courts



SOLAR  
IS THE NEW  
STANDARD



Lighting Your Project  
Visual Integration  
Technical Specification  
Appendices

3-9  
10-11  
12-21  
22

Lighting Your Project

---

01

# HELIA

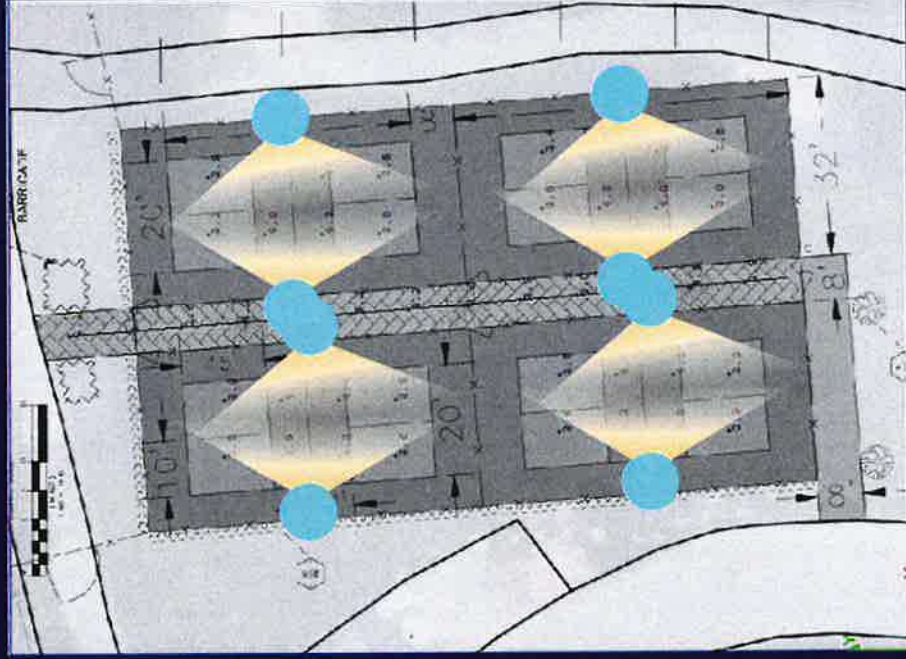
## Light Set Free – Skylight Collection

HELIA luminaires will be installed to enhance your space with light. True concentrations of technology, they deliver a unique and fully customizable lighting signature. Their refined design allows them to blend harmoniously into the landscape, both day and night.

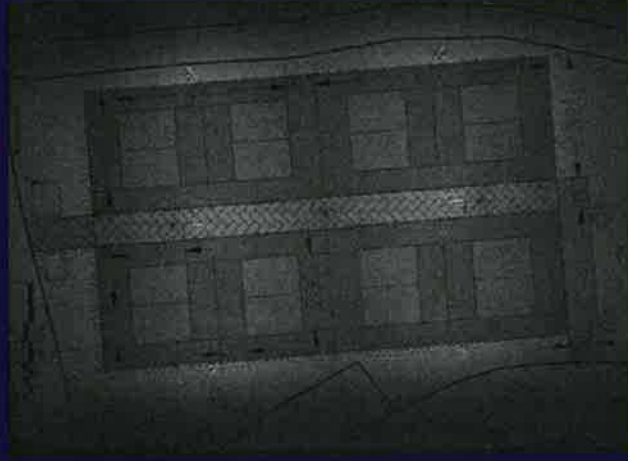
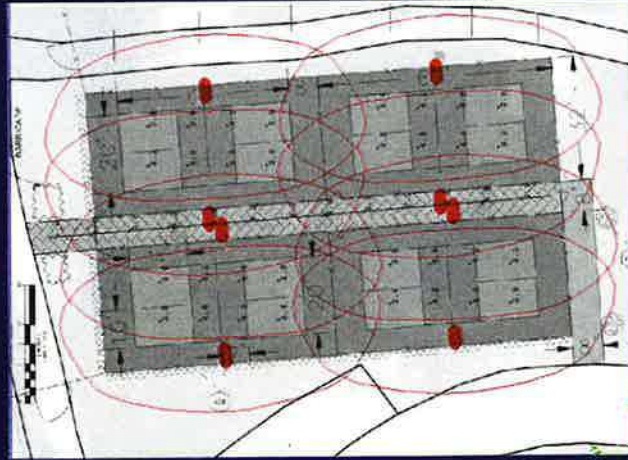
HELIA lifts constraints and invites you to gaze at the sky.



# Layout Plan



HELIA - Up



## Photometric Study

Zone	Results		Quantity
	Average Illuminance (fc)	Uniformity (Avg/Min)	
Pickleball Courts	{3.65 - 3.78}	{1.34 - 1.28}	8
Walk Path	3.82	3.47	8
TOTAL			8

# Technical Specifications

---

# 02

# Study Process - For Lighting 365 Nights Per Year

## [1] Site Meteorological Data ANALYSIS

For your lighting project we have taken into account:  
The conditions of use (orientation, panel tilt)  
External parameters (shading, temperature, solar calendar)

## [2] SIMULATION of products over a typical year

Our solar sizing software has made it possible to  
validate the lighting equipment for your needs.  
The operation is simulated over a typical year,  
average of the last 10 years.

## [3] SIZING to create a tailor-made project

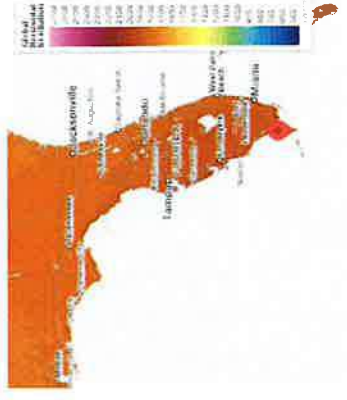
The key criteria to optimize your project:

- Average state of charge of the battery in the year
- Minimum state of charge
- Comparison of energy created / energy consumed
- Worst case scenario (longest night; lowest solar radiation)

## [4] RESULTS

The solution we offer is the most optimized to fully  
fulfill lighting needs.


GPA Coordinates : 24.722903, -81.04995



# Helia Up – Product sheet

**QUANTITY : 8**

**PHOTOVOLTAIC MODULE**




Power	150 Wc
Tilt	10°

**BATTERY STORAGE**




Battery	936 Wh
---------	--------

**LED LUMINAIRE**



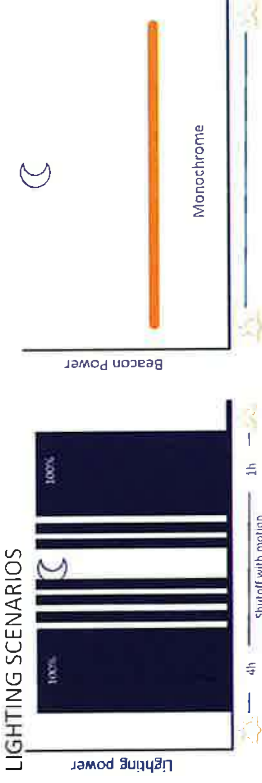
Efficacy	200 lm/W
Color Temperature	3000 K
Tilt	0°

**STRUCTURE**



Height	20'
Color	Black Shadow
Treatments	-

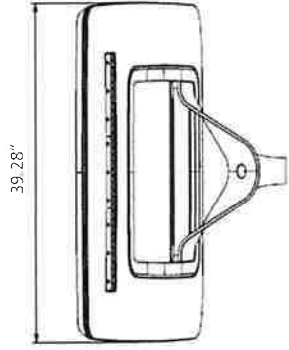
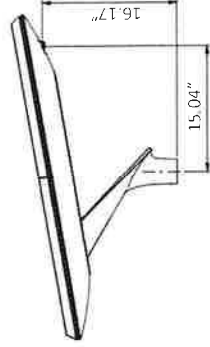
**LIGHTING SCENARIOS**



Lighting Power

Beacon Power

Monochrome



# Appendices

---

# 03

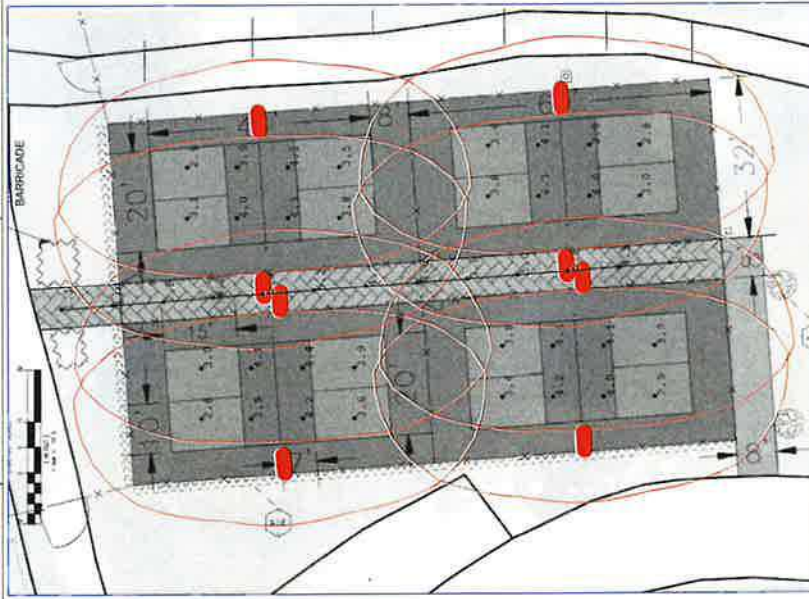
# Pickleball Courts



8840 Cypress Waters Blvd  
Coppell, TX 75019  
Phone Number: (339) 225 4530  
www.fonrochesolarlighting.com

By: Mateo Chevalier  
m.chevalier@fonroche-lighting.com  
Date: 12/1/2025

Lighting Plan Rev B  
Project Number: G10502



Luminaire Schedule Symbol	Qty	Label	Arrangement	LLF	Luminaire Lumens	Luminaire Height	Arm
B	8	HELIA UP-3K-27W	Single	0.900	4174	27'	1.25

### Calculation Summary

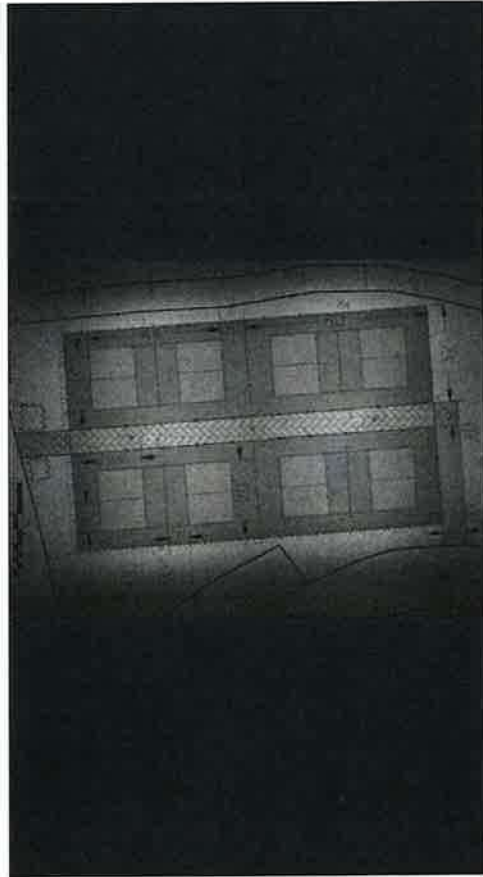
Label	Calc Type	Units	Avg	Max	Min	Avg/Min	Max/Min
Pickleball Court	Illuminance	Fc	3.74	4.4	2.9	1.34	1.57
Pickleball Court 1	Illuminance	Fc	3.76	4.4	2.9	1.30	1.52
Pickleball Court 2	Illuminance	Fc	3.70	4.3	2.9	1.28	1.48
Pickleball Court 3	Illuminance	Fc	3.65	4.3	2.8	1.30	1.54
Walk Path	Illuminance	Fc	3.82	5.5	1.1	3.47	5.00

Pickleball Courts

Lighting Plan Rev B  
Project Number: G10502

By: Mateo Chevallier  
m.chevallier@fonroche-lighting.com  
Date: 12/11/2025

 **FONROCHE**  
lighting AMERICA  
8840 Cypress Waters Blvd  
Coppell, TX 75019  
Phone Number: (339) 225 4530  
www.fonrochesolarlighting.com

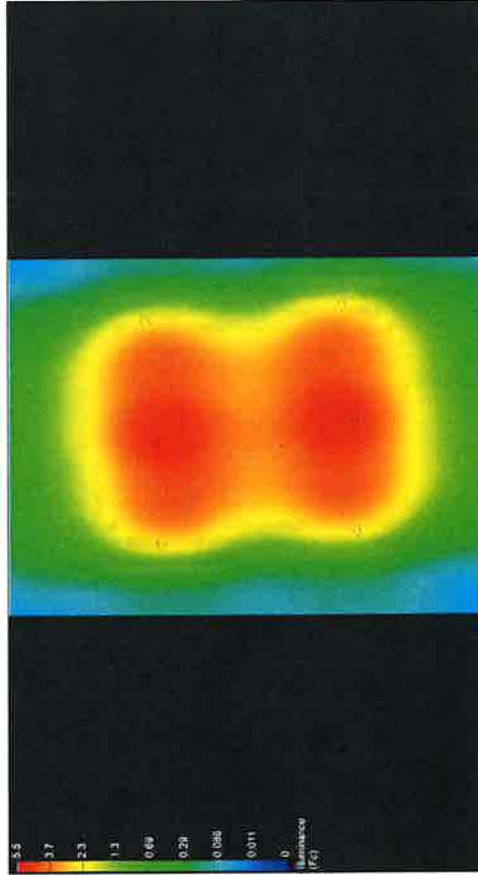


# Pickleball Courts

Lighting Plan Rev B  
Project Number: G10502

By: Mateo Chevalier  
m.chevalier@fonroche-lighting.com  
Date: 12/1/2025

 **FONROCHE**  
lighting AMERICA  
8840 Cypress Waters Blvd  
Coppell, TX 75019  
Phone Number: (339) 225 4530  
www.fonrochesolarlighting.com





SOLAR  
IS THE NEW  
STANDARD

Prepared By: Mateo CHEVALIER

Sales Contact: Eleazar Acosta – [eleazar.acosta@fonroche.us](mailto:eleazar.acosta@fonroche.us)

Phone. : 339-225-4530  
[Sales@Fonroche.US](mailto:Sales@Fonroche.US)

FONROCHE LIGHTING | 2224 SE Loop 820 Building C, Fort Worth, TX 76140  
[www.FonrocheSolarLighting.com](http://www.FonrocheSolarLighting.com)

Opportunity Owner	Eleazar Acosta	Quote Number	00087388
Payment Terms	50% deposit, 50% Net 30 from Ship Date-contingent on credit approval	Quote Name	G10502-City of marathon FL- Pickleball courts-RevB
Shipping Terms	Prices are FOB Origin	Quote Date	12/1/2025
		Quote Expiration Date	3/1/2026
		Est. Lead Time	Within 6 Weeks
		Ship To Name	City of Marathon
		Ship To	United States

Shipping estimated; final cost determined on day of shipping and added to invoice.

Shipping fees do not include offloading at the delivery site. It is the customer's responsibility to arrange for any necessary equipment or personnel to unload the shipment upon arrival.

Fonroche is not in charge of or responsible for utility lines. Fonroche positions its lights on each layout to provide the proper photometric results. It is solely the responsibility of the customer to do their own due diligence in cooperation with the local utility to determine easement/spacing requirements from the utility lines, as well as any other requirements of the local utility.

Beware of Fraud: Any advance payment request will only be made on the basis of a proforma invoice sent by Fonroche Lighting America.

Fonroche Model Number	Fonroche Product Description	Price System	Quantity	Amount
[Helia-3K-T2] [150-3P] Fixture Color: BK POLE: 20Ft. Round Tapered Pole-Direct Burial- No Arm-Pole Color:	Helia Solar Lighting Assembly with 936Wh-24V NiMH Battery , special extreme temperature (from -40F to +158F), 1 x 150W solar module with Top of Pole mount. Intelligent BMS, programmable control system, and integrated motion detector. Provisioned for Single Fixture configuration. Single Helia Fixture Color Temp 3K Dist. Type T2-Fixture Color: 20Ft. Round Tapered Pole-Direct Burial- No Arm-Pole Color is 8 Year Warranty All Night Lighting 365 Days a Year - Full Battery Replacement Assumes No Shading   Assumes little or no snow 10 Degrees Tilt 100% =27 Watts worst case conditions.T-PM: 4 hrs. @100%   T-N (Balance of night) @0%   T-AM: 1 hrs. @100%	USD 4,571.00	8.00	USD 36,568.00
		Total Line Items		USD 36,568.00
		Programming,Pkg, Ship & Handling Est.		USD 4,658.00
		Quote Total		USD 41,226.00

**This quotation is subject to the following terms and conditions**

Seller's Terms and Conditions of Sale in effect on the date of this order shall apply to this quote and are hereby incorporated by reference. Seller's Terms and Conditions of Sale may be viewed at <https://www.fonrochesolarlighting.com/about-us/terms/>

Pricing is based on Fonroche Lighting America's Standard Terms & Conditions and any additional terms stipulated herein. It is the Representative's responsibility to convey these terms to the customer. Without prior written approval from Fonroche Lighting America's Sales Director, any deviation from these terms may constitute a change in this pricing at the time of order.



**Fonroche Lighting America**  
2224 SE Loop 820, Building C  
Fort Worth, TX 76140  
339-225-4530

