

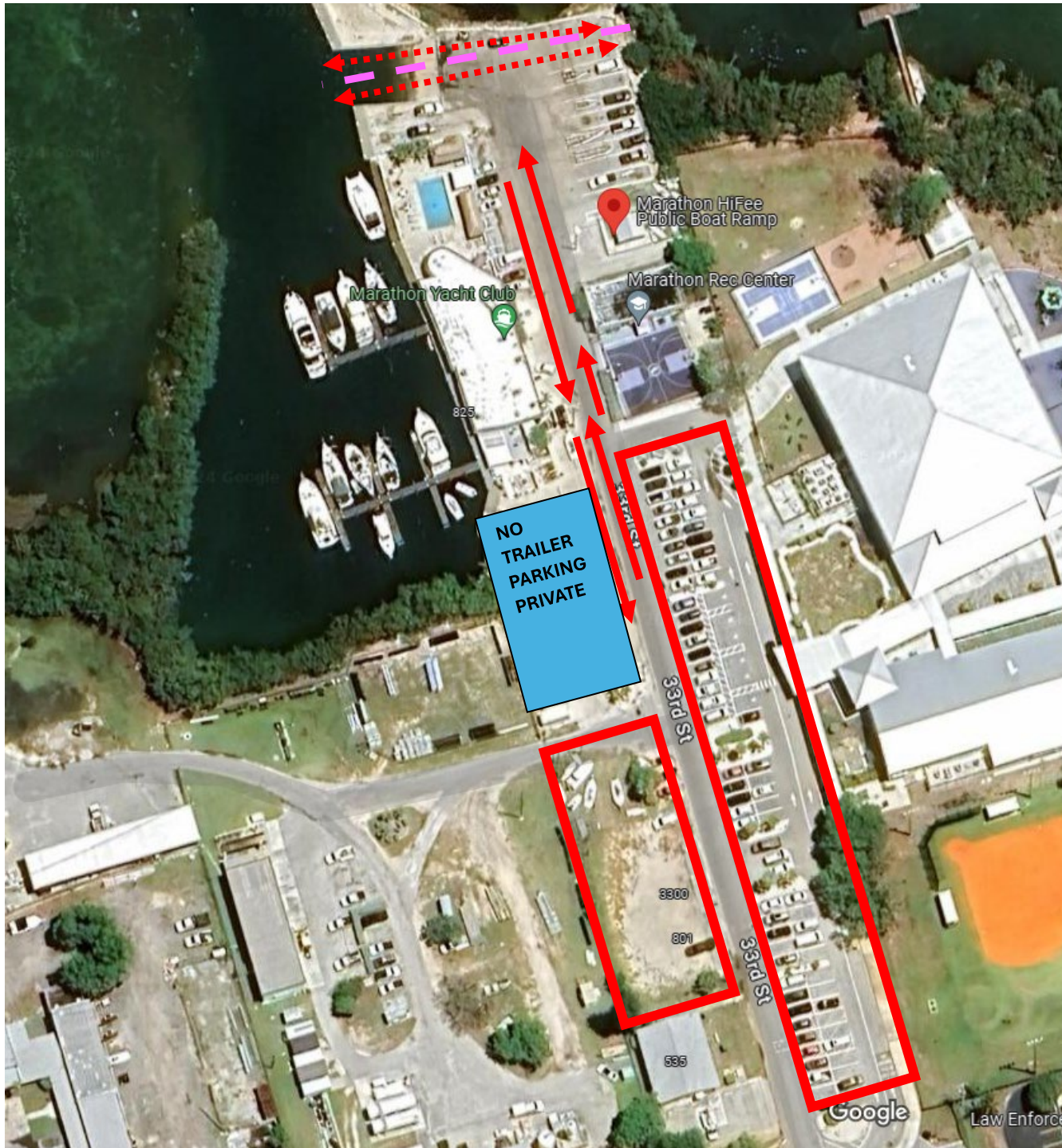


## HARBOR BOAT RAMP DIRECTIONS

The red arrows on the map to the left are for BOAT TRAFFIC ONLY. Auto traffic may utilize Harbor and Marlin Drives in either direction.

**BOAT TRAFFIC PATTERN**  
Boat traffic must enter on Marlin Drive, go North to Tuna Drive, turn left (West), to Harbor Drive then turn left (South) to the ramp.  
**THIS IS FOR LAUNCH AND RETREIVAL BOTH.**

There will be signage on Aviation and the other corners for this pattern.



### **33<sup>rd</sup> ST BOAT RAMP DIRECTIONS**

The red arrows on the map to the left are for BOAT TRAFFIC at 33<sup>rd</sup> Street for Mini-Season.

### **BOAT TRAFFIC PATTERN**

Boats enter on the East side of the drive. There are TWO ramps at this location, both will be utilized. There will be striping painted on the pavement for direction.

We are asking that boaters please stage their boats while they are in line waiting. We will run both ramps at the same time, so you will need to help direct traffic.

When retrieving the boat and leaving, please keep to the WEST side of the drive and to NOT stop next to the Yacht Club. Please pull down to the gravel parking across from the school to tie up their boat, etc.

Trailers parking in the additional parking gravel lot or at Switlick are also subject to the \$20 parking fee (red squares).

**QUAY BOAT RAMP  
DIRECTIONS**

The red arrows on the map to the left are for BOAT TRAFFIC ONLY.

**BOAT TRAFFIC PATTERN**

Boat traffic must enter at the East entrance, then follow the drive to launch and for retrieval. Exit the property and if parking is needed, return to East entrance to park.

